

Welcome to

# Nihon Kohden America

## Neurology Accessory Catalog



Section

1

Electrode  
Application  
Supplies

2

EEG/PSG

3

EP/EMG/NCV

# Welcome to Nihon Kohden America Neurology Accessory Catalog

## Order Information

To order any of the listed products simply:



90 Icon Street, Foothill Ranch, CA 92610  
(800) 325-0283  
(949) 580-1555  
Fax: (949) 580-1550  
[www.nkusa.com](http://www.nkusa.com)

## PHONE it in

Call us Toll Free Monday through Friday from 7:00 am to 5:00 pm (PST) (800) 325-0283 extension 7021.

## E-mail us

[info@nkusa.com](mailto:info@nkusa.com)

## FAX it anytime

Use the enclosed Order Form and fax it day or night, 7 days a week. (949) 580-1550

## Send it by mail

Use the enclosed Order Form and mail us at:  
Nihon Kohden America, Inc.  
90 Icon Street  
Foothill Ranch, CA. 92610  
Attn: Customer Service Department

## Customer Satisfaction Guarantee:

If you are not satisfied with your Nihon Kohden accessory purchase, notify us within 15 days of your receipt and we will replace it or credit your account. Special orders are subject to limitations and restrictions. There is a 20% restocking fee for returns over 15 days.

## Minimum Order Amount:

The minimum order amount is \$50.00 for accessories and \$25.00 for service parts.

## Payment Methods:

We want your order processing to be as simple as possible. To expedite orders for new customers we accept Visa and MasterCard.

## Term of Payment:

Sales tax will be added to all orders where applicable. Products may be shipped on net 30 days terms with approved credit

## Order Verification & Delivery:

To check on the status of an order or to verify shipment, please call our Customer Service Department at (800) 325-0283 extension 7021. Normal delivery time is 7-10 business days. Immediate Delivery may be accommodated by Federal Express "Priority One" service with next business day delivery (by 10:30am) or "Priority Two" service which guarantees delivery within two business days. An additional charge of \$25.00 will be included on your invoice for all rush orders.

### Disclosures:

Nihon Kohden certifies that products have been produced in compliance with Good Manufacturing Practices for Medical Device Manufacturers as set forth by the Food and Drug Administration.

### Returning Merchandise:

If you need to return or exchange merchandise, please call our customer service department at (800) 325-0283 extension 7021. One of our Customer Service Sales Representatives will assist you with the return process by giving you a return receipt number. This number must be used when returning any accessory ordered from Nihon Kohden. We cannot accept returns on specific products where packages have been opened or the product has been used.

### Nihon Kohden Responsibilities

Nihon Kohden is responsible for delivering effective, reliable products to our customers. Nihon Kohden is not responsible for injury, infection, or any other consequence as a result of misuse of products. Our accessories should be used by medical professionals. Sterilization and proper safety procedures must follow at all times when using Nihon Kohden products or any other products. We ask that you consult your Operations Manual for more details on product maintenance, repair, and intended use.

# Table of Contents

## SECTION 1

### Electrode Application Supplies

Adhesive .....	1
Skin Preparation Cream .....	1
Gel .....	1

## SECTION 2

### EEG/PSG

Electrodes .....	5
Input Boxes .....	6
Connector Cables .....	6
AirEEG/PSG (WEE-1000) Accessories .....	7
Trackit-2 Accessories .....	8
Sleep Testing Products .....	10
Miscellaneous .....	27
Paper, Pen & Ink .....	29
Pouches .....	29

## SECTION 3

### EP/EMG/NCV

Electrodes .....	32
Needle Electrodes .....	34
Injectable Needle Electrodes .....	37
Stimulators .....	38
Cables/Connectors .....	39
Miscellaneous .....	39

**Accessory Order Form ..... 3, 30, 43**

### Price List

Section

1

Electrode  
Application  
Supplies

2

EEG/PSG

3

EP/EMG/NCV

# SECTION 1

## Electrode Application Supplies



Adhesive

Skin Preparation Cream

Gel

Accessory Order Form

## Electrode Application Supplies

### Elefix, Hard Tub

Electrode adhesive, 400 grams per tub. Used with all surface applied electrodes. Shelf life is 3 years unopened; 6 months after opening.

Applicable Instruments: All EEG and EP/EMG Instruments

**Part No: Z-401CE**

**Qty: 3/BOX**



### Elefix, Squeeze Tube

Electrode adhesive, 180 grams per tube. Used with all surface applied electrodes. Shelf life is 3 years unopened; 6 months after opening.

Applicable Instruments: All EEG and EP/EMG Instruments

**Part No: Z-181JE**

**Qty: 10/BOX**



### SkinPure

Skin preparation cream, 135 grams per tube. Used with all surface applied electrodes. Shelf life is 3 years unopened; 6 months after opening.

Applicable Instruments: All EEG and EP/EMG Instruments

**Part No: YZ-0019**

**Qty: 10/BOX**



### Aquasonic 100

Ultrasonic transmission gel, 8.5 ounce tube. Use for all EEG or EMG procedures where a viscous gel is required. Completely aqueous, will not stain clothing.

**Part No: KK-01-08**

**Qty: 1**

### SignaGel

Multipurpose saline electrode EMG gel, 8.0 ounce tube

**Part No: KK-15-25**

**Qty: 1**



## Section

1

Electrode Application Supplies

2

EEG/PSG

3

EP/EMG/NCV



# SECTION 2

## EEG/PSG



Electrodes

Input Boxes

Connector Cables

AirEEG/PSG (WEE-1000) Accessories

Trackit-2 Accessories

Sleep Testing Products

Pouches

Miscellaneous

Paper, Pen & Ink

Accessory Order Form

## EEG Electrodes

### Electrode Clip

Earlobe Clip electrode with 60" cable and 1.5mm protected connector.  
Applicable Instruments: All Nihon Kohden Touch Proof Input Boxes

**Part No: NE-311A**

**QTY: 1**



### Electrode, Collodian Disc

10mm Silver Disc electrodes with hole and 60" cable; 1.5mm protected connectors. Applicable Instruments: All Nihon Kohden Touch Proof Input Boxes

**Part No: NE-134A**

**QTY: 12/PKG**



### Electrode, Collodian Disc, Gold

9mm Gold Plated Disc electrodes with hole and 60" cable; 1.5mm protected connectors. Applicable Instruments: All Nihon Kohden Touch Proof Input Boxes

**Part No: NK-TPGOLD**

**QTY: 12/PKG**



### Electrode, Disc

10mm Silver Disc electrodes with brown plastic covering and 60" cable; 1.5mm protected connectors. Applicable Instruments: All Nihon Kohden Touch Proof Input Boxes

**Part No: NE-113A**

**QTY: 26/PKG**



### Electrode Lead, EEG

78" Cable; connects limp clip electrodes to the input box with 1.5mm protected connectors. Use with 2144-005553 ECG limp clip (not included)

**Part No: BC-112B**

**QTY: 2/PKG**



### Electrode, ECG Limp Clip

Used with BC-112B ECG lead wires (not included)

**Part No: 2144-005553**

**QTY: 4/PKG**



Section

1

Electrode  
Application  
Supplies

2

EEG/PSG

3

EP/EMG/NCV

## Input Boxes

Part No:	Description	QTY
JE-011A	32 Channel EEG Mini Input Box. (For AirEEG, EEG-1100/1200/9200)	1
JE-012A	PSG Mini Input Box. (For AirPSG)	1
JE-013A	64 Channel EEG Mini Input Box. (For AirEEG)	1
JE-115A	40 Channel 10-20 Mini Input Box for JE-425A amplifier. Includes 5m cable.	1
JE-116A	40 Channel Micro Mini Input Box for JE-425A amplifier. Includes 5m cable. (For EEG-1100)	1
JE-208A	64 Channel 10-20 Type Input Box for JE-207A amplifiers. Includes 10m cable. (For JE-207/209/212 amplifiers)	1
JE-213A	64 Channel Matrix Type Mini Input Box with Z input for JE-207/209/212 amplifiers. Includes 5m cable. (For EEG-1100/1200)	1
JE-214A	64 Channel Matrix Type Mini Input Box for JE-207/212 amplifiers. Does not include cable. (For EEG-1100/1200)	1
JE-915A	Mini PSG Input Box. Includes 3m cable. (For JE-912A amplifier)	1
JE-922A	Mini Input Box. Includes 5m cable. (For JE-910/911/921 amplifiers)	1
JE-225AK	Flat Pack Mini 64 Channel 1-64, includes 10m cable	1
JE-226AK	Flat Pack Mini 64 Channel 65-128, includes 10m cable	1
JE-227AK	Flat Pack Mini 64 Channel 129-192, includes 10m cable	1

## Connector Cables

Part No:	Mini Input Box	Main Amplifier	Length
662552B	JE-011A	JE-425A	5 m
693269A	JE-011A	JE-425A	10 m
662561B	JE-011A	JE-910A/911A	5 m
693278A	JE-011A	JE-910A/911A	10 m
654712C	JE-011A	ZB-101A	70 cm
654721B	JE-012A	ZB-101A	70 cm
695302	JE-013A	JE-207A/209A/212A	10 m
667021A	JE-013A	ZB-102A	70 cm
YZ-0235	JE-116A	JE-425A	5 m
693251A	JE-116A	JE-425A	10 m
549808A	JE-208A/210A/213A	JE-207A/209A/212A	10 m
570188A	JE-208A/210A/213A	JE-207A/209A/212A	24 cm
615612A	JE-208A/210A/213A	JE-207A/209A/212A	5 m
628982A	JE-208A/210A/213A	JE-207A/209A/212A	2 m
732486	JE-208A	JE-207A/209A/212A	5M
732495	JE-208A	JE-207A/209A/212A	10M
708218A	JE-213A	JE-207A/209A/212A	5M
708227A	JE-213A	JE-207A/209A/212A	10M
708192A	JE-214A	JE-209A/212A	5M
708209A	JE-214A	JE-209A/212A	10M
708299A	JE-225A	JE-207A/209A/212A	10M

Section

①

Electrode  
Application  
Supplies

②

EEG/PSG

③

EP/EMG/NCV

Part No:	Mini Input Box	Main Amplifier	Length
708281	JE-226A	JE-207A/209A/212A	10m
721854	JE-227A	JE-207A/209A/212A	10m
549791A	JE-210A/214A	JE-209A/212A	10m
615621B	JE-210A/214A	JE-209A/212A	5m
570179A	JE-210A/214A	JE-209A/212A	24cm
644073B	JE-215A	JE-207A/209A/212A	5m
644082A	JE-215A	JE-207A/209A/212A	10m
644117C	JE-216A	JE-207A/209A/212A	5m
644126B	JE-216A	JE-207A/209A/212A	10m
644091C	JE-217A	JE-207A/209A/212A	5m
644108A	JE-217A	JE-207A/209A/212A	10m
523702B	JE-913A	JE-910A/911A	5m
649398A	JE-913A	JE-910A/911A	10m
531248B	JE-914A	JE-912A	2.8m
683485A	JE-915A	JE-912A	2.8m
674744A	JE-922A	JE-910A/911A/921A	5m
686981A	JE-922A	JE-910A/911A/921A	10m

## EEG Input Adapter

Respiratory input adapter for JE-425A amplifier

**NK-2605**

**QTY 1**

## AirEEG/PSG Wireless System (WEE-1000A) Accessories

Part Number	Description	QTY
654686A	Isolator connection cable	1
SC-101A	Isolator unit	1
JL-101A	SpO <sub>2</sub> adapter unit (Nonin) SpO <sub>2</sub> sensor not included	1
YZ-0308	Rechargeable lithium-ion battery pack	1
RK-0056	Battery holder for 9V battery	1
YZ-0310	Battery charger	1
RK-0057	Battery holder for lithium-ion battery	1
654507	AirEEG/PSG event marker cable	1

Section

1

Electrode  
Application  
Supplies

2

EEG/PSG

3

EP/EMG/NCV

## Trackit-2 Ambulatory Recorder Accessories

Trackit-2 door opening tool, hex 2.5mm

**Part No: NK-1115** **QTY: 1**

Trackit-2 battery box, single PP3

**Part No: NK-1140** **QTY: 1**



Trackit-2 battery box PP3

**Part No: NK-1111** **QTY: 1**



Battery box Li-ion

**Part No: NK-1112** **QTY: 1**

9 volt lithium battery for all Trackit models

**Part No: NK-U9VL-FP** **QTY: 1**

Rechargeable Li-ion battery

**Part No: NK-BP511** **QTY: 1**

2 GB memory Compact Flash Card

**Part No: NK-CFMEMORY-2GB** **QTY: 1**

2 GB memory Compact Flash Card

**Part No: NK-PCMCIA-2.0GB** **QTY: 1**

Compact Flash PCMCIA Adapter

**Part No: NK-PCMCIA-ADAPT** **QTY: 1**

Compact Flash Reader, USB 2.0 (Win 2000, XP Professional)

**Part No: NK-E92352** **QTY: 1**

Trackit secure bag

**Part No: NK-1116** **QTY: 1**



Trackit harness, adult

**Part No: NK-1117** **QTY: 1**



Section

1

Electrode  
Application  
Supplies

2

EEG/PSG

3

EP/EMG/NCV

Trackit harness, child

**Part No: NK-1118**

**QTY: 1**



Trackit-2 bag, PCU or Click-on PCU

**Part No: NK-1142**

**QTY: 1**

Trackit strap extension

**Part No: NK-1179**

**QTY: 1**



Trackit-2 event marker

**Part No: NK-9400**

**QTY: 1**

Trackit infrared LED

**Part No: NK-9507**

**QTY: 1**

Trackit-2 user manual

**Part No: NK-1114**

**QTY: 1**

Nonin SpO<sub>2</sub> Adapter – Nonin XPOD adapter for use with Trackit-2 sleep recorders. SpO<sub>2</sub> sensor not included. Requires Nonin SpO<sub>2</sub> sensors.

**Part No: NK-1022**

**QTY: 1**

## Trackit-2 Patient Connection Units

Trackit-2 PCU cable, leaded 0.5m

**Part No: NK-1105**

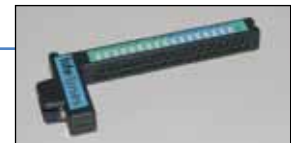
**QTY: 1**



Trackit-2 leaded connector 24 (PCU)

**Part No: NK-1104**

**QTY: 1**



Trackit short Click-on PCU for all recorders

**Part No: NK-1181**

**QTY: 1**

Trackit Sleep Click-On PCU – For Trackit-2 18+8 recorders (can be used for Trackit-2 24P models without bipolar channels). Includes built-in pressure transducer sensor.

**Part No: NK-1220**

**QTY: 1**

Section

1

Electrode  
Application  
Supplies

2

EEG/PSG

3

EP/EMG/NCV

## Trackit-2 PC Connection

Trackit-2 PC cable with RJ45/D9

**Part No: NK-2030** **QTY: 1**

Cable – ISO to Trackit connector

**Part No: NK-1008** **QTY: 1**

Trackit-2 Basic Interface Kit – Includes a USB-serial adapter and driver, the RJ45-serial adapter and the CAT5 cable.

**Part No: NK-9550** **QTY: 1**

Trackit-2 Full Interface Kit – Includes medical grade DC power supply, USB-serial adapter and driver, RJ45 serial adapter and CAT5 cable – required for use of Trackit as a bedside amplifier.

**Part No: NK-9555** **QTY: 1**

Bluetooth Adapter – Includes USB Bluetooth adapter and drivers. For use with Trackit-2 Bluetooth and Nomad devices.

**Part No: NK-BTA01** **QTY: 1**

## Home Sleep Testing Accessories

### Trackit Sleepwalker

#### Starter Kits

SleepSense Starter Kit for Trackit Sleepwalker – Includes 2 large (NK-9002-L90) and 2 X-large (NK-9002-L120) RIP Belts, interface cables for chest (NK-9102-NO) and abdomen (NK-9101-NO), and 2 PLM sensors with Velcro straps (NK-1771-2-KIT) and Y-splitter cable (NK-1726). Does not include SpO<sub>2</sub> probes, cannulas, EEG leads or thermistors/thermocouples.

**Part No: NK-AASM-AMB-KIT** **QTY: 1**

#### Sleepwalker Replacement Components

Part No:	Description	QTY
SpO <sub>2</sub> Probes	See page 15 under Nonin	
Electrodes	See page 5 under EEG electrodes	

Section

1

Electrode  
Application  
Supplies

2

EEG/PSG

3

EP/EMG/NCV

**Sleepwalker Replacement Components – Continued**

<b>Part No:</b>	<b>Description</b>	<b>QTY</b>
Thermocouple/ Thermistors	See page 17 under Pro-Tech and SleepSense	
NK-1306	Adult nasal cannula with filter, length of 8.25"	60/BOX
NK-1308	Adult nasal/oral cannula with filter, length of 8.25"	30/BOX
NK-14805-2-FT	Adult nasal cannula with filter, cannula length of 2'	5/BOX
NK-14805-2FT-50	Adult nasal cannula with filter, cannula length of 2'	50/BOX
NK-9101-NO	RIP abdominal sensor with keyhole connector	1
NK-9102-NO	RIP chest sensor with keyhole connector	1
RIP Belts	See page 23-25 under SleepSense RIP Belts	
NK-1771-2-KIT	2 piezo sensors with 2 Velcro ankle bands	1
NK-1726	Y-splitter cable for NK-1772 kit	1

**Nomad****Starter Kits**

SleepSense Starter Kit – Includes 2 X-large (NK-9002-L120) and 2 XX-large (NK-9002-L150) RIP Belts, interface cables for chest (NK-9102-NO) and abdomen (NK-9101-NO), and adult thermocouple with cannula hanger (1401-HNO). SpO<sub>2</sub> probe, cannulas and PLM sensors sold separately.

**Part No: NK-NOMAD-KIT****QTY: 1**

SleepSense Starter Kit – Includes 2 X-large (NK-9002-L120) and 2 XX-large (NK-9002-L150) RIP Belts, interface cables for chest (NK-9102-NO) and abdomen (NK-9101-NO), and adult thermocouple with cannula hanger (NK-1401-HNO), and 2 PLM sensors with Velcro straps (NK-1771-2-KIT). SpO<sub>2</sub> probe and cannulas sold separately.

**Part No: NK-NOMAD-PLM****QTY: 1****Nomad Replacement Components**

<b>Part No:</b>	<b>Description</b>	<b>QTY</b>
SpO <sub>2</sub> Probes	See page 15 under Nonin	
NK-1401-HNO	Thermocouple with cannula hanger and keyhole connector	1
NK-14805-2-FT	Adult nasal cannula with filter, cannula length of 2'	5/BOX
NK-14805-2FT-50	Adult nasal cannula with filter, cannula length of 2'	50/BOX
NK-9101-NO	RIP abdominal sensor with keyhole connector	1
NK-9102-NO	RIP chest sensor with keyhole connector	1
RIP Belts	See page 23-25 under SleepSense RIP Belts	
NK-1771-2-KIT	2 piezo sensors with 2 Velcro ankle bands	1
NK-BTA01	USB Bluetooth adapter	1
NK-NMDCASE	Carrying case for Nomad and sensors	1

Section

①

Electrode  
Application  
Supplies

②

EEG/PSG

③

EP/EMG/NCV

## EOS Accessories

### Replacement Components

Part No:	Description	QTY
NK-1306	Adult Pro-Flow nasal cannula, length 8.25"	60/BOX
NK-1308	Adult Pro-Flow Plus™ nasal/oral cannula, length 8.25"	30/BOX
NK-1107	Cannula filter	50/BOX
NK-1098	Blue EOS wireset 36"	3
NK-1099	Red EOS wireset 36"	3
1091	Generic Quantum™ wireset, one required for each NK-1575-XXX belt	1
NK-1575-001	Quantum™ Sensor, size 1 (10" – 16")	1
NK-1575-002	Quantum™ Sensor, size 2 (15" – 25")	1
NK-1575-003	Quantum™ Sensor, size 3 (24" – 35")	1
NK-1575-004	Quantum™ Sensor, size 4 (34" – 50")	1
NK-1575-005	Quantum™ Sensor, size 5 (49" – 75")	1
NK-1681	PLM sensors – For use with EOS device only. Includes 2 PLM sensors. Velcro straps sold separately.	1
NK-1702	PLM sensors – For use with EOS device only. Includes 2 PLM sensors and Velcro strap kits.	1
NK-1689	PLM Velcro bands for use with NK-1681, NK-1702, or any Pro-Tech PLM sensor. Does not include PLM sensors.	1

## SpO<sub>2</sub> Adapters

### Nihon Kohden

NK SpO<sub>2</sub> Adapter – For use only with JE-912A and JE-921A amplifiers and Nihon Kohden SpO<sub>2</sub> sensors. SpO<sub>2</sub> sensors not included. Replaces JL-951T3.

**Part No: JL-550T1**

**QTY: 1**

Nonin SpO<sub>2</sub> Adapter – For use only with AirPSG and AirEEG amplifiers and Nonin SpO<sub>2</sub> sensors. SpO<sub>2</sub> sensors not included.

**Part No: JL-101A**

**QTY: 1**

### Nonin

Nonin SpO<sub>2</sub> XPOD Adapter – For use only with Trackit-2 sleep recorders and Nonin SpO<sub>2</sub> sensors. SpO<sub>2</sub> sensors not included.

**Part No: NK-1022**

**QTY: 1**

Section

1

Electrode  
Application  
Supplies

2

EEG/PSG

3

EP/EMG/NCV

## SpO<sub>2</sub> Probes Disposable

### Nihon Kohden

Pediatric SpO<sub>2</sub> Disposable Probe – For use with JL-951T3 or JL-550T1 SpO<sub>2</sub> adapter on Nihon Kohden 9000 Series amplifiers.

**Part No: TL-272T3**

**QTY: 24/BOX**

Adult SpO<sub>2</sub> Disposable Probe – For use with JL-951T3 or JL-550T1 SpO<sub>2</sub> adapter on Nihon Kohden 9000 Series amplifiers.

**Part No: TL-271T3**

**QTY: 24/BOX**

Neonate SpO<sub>2</sub> Disposable Probe – For use with JL-951T3 or JL-550T1 SpO<sub>2</sub> adapter on Nihon Kohden 9000 Series amplifiers.

**Part No: TL-273T3**

**QTY: 24/BOX**

## Semi-disposable Probes

### Nihon Kohden

Adult/Neonatal SpO<sub>2</sub> Semi-disposable Probe – Requires sensor wraps (25 included). For use with JL-951T3 or JL-550T1 SpO<sub>2</sub> adapter on Nihon Kohden 9000 Series amplifiers.

**Part No: TL-052S**

**QTY: 5/BOX**

Pediatric SpO<sub>2</sub> Semi-disposable Probe – Requires sensor wraps (25 included). For use with JL-951T3 or JL-550T1 SpO<sub>2</sub> adapter on Nihon Kohden 9000 Series amplifiers.

**Part No: TL-062S**

**QTY: 5/BOX**

### Nonin

Neonate Flexible Wrap SpO<sub>2</sub> Semi-disposable Probe – Requires sensor wraps (NK-8000JFW) (25 included). For use with Nomad portable sleep recorder, AirPSG, EOS Sleep Screener, Polysmith 1 and 2 Bed Sleep Systems using LaMont Amplifiers, Trackit Sleepwalker and Trackit Ambulatory Recorder (requires Nonin adapter NK-1022) or any Nonin SpO<sub>2</sub> compatible device.

**Part No: NK-8001J**

**QTY: 1**

Adult Flexible Wrap SpO<sub>2</sub> Semi-disposable Probe – Requires sensor wraps (NK-8000JFW) (25 included). For use with Nomad portable sleep recorder, AirPSG, EOS Sleep Screener, Polysmith 1 and 2 Bed Sleep Systems using LaMont amplifiers, Trackit Sleepwalker, Trackit Ambulatory Recorder (requires Nonin adapter NK-1022) or any Nonin SpO<sub>2</sub> compatible device.

**Part No: NK-8000J**

**QTY: 1**

## Section

1

Electrode  
Application  
Supplies

2

EEG/PSG

3

EP/EMG/NCV

**Nonin Accessories for NK-8001J and NK-8000J**

Sensor Wraps – For use with NK-8000J or NK 8001J SpO<sub>2</sub> reusable sensors.

**Part No: NK-8000JFW**

**QTY: 25/PKG**

2.5m Cable Extender – For use with NK-8000J or NK 8001J SpO<sub>2</sub> reusable sensors.

**Part No: JL-900P**

**QTY: 1**

**Reusable Probes****Nihon Kohden**

Pediatric/Adult Multi-site SpO<sub>2</sub> Reusable Probe\*

**Part No: TL-220T**

**QTY: 1**

Adult SpO<sub>2</sub> Reusable Finger Clip\*

**Part No: TL-201T**

**QTY: 1**

Adult SpO<sub>2</sub> Reusable Probe\* – Cable length 63".

**Part No: TL-631T3**

**QTY: 1**

\*For use with JL-951T3 or JL-550T1 SpO<sub>2</sub> adapter on Nihon Kohden 9000 Series amplifiers.

**Datex-Ohmeda**

Adult SpO<sub>2</sub> Reusable Finger Clip. For use with Datex-Ohmeda 3900 SpO<sub>2</sub> device.

**Part No: NK-FINGERCLIP**

**QTY: 1**

**Nonin**

Adult Flexi-Form SpO<sub>2</sub> Reusable Probe\*\*

**Part No: NK-7000A**

**QTY: 1**

Adult SpO<sub>2</sub> Reusable Finger Clip\*\*

**Part No: NK-8000AA**

**QTY: 1**



## Section

1

Electrode  
Application  
Supplies

2

EEG/PSG

3

EP/EMG/NCV

\*\*For use with Nomad portable sleep recorder, AirPSG (requires NK adaptor JL-101A), EOS Sleep Screener, Polysmith 1 and 2 Bed Sleep Systems using LaMont amplifiers, Trackit Sleepwalker, Trackit Ambulatory Recorder (requires Nonin adaptor NK-1022) or any Nonin SpO<sub>2</sub> compatible device.

Small SpO<sub>2</sub> Soft Reusable Sensor\*\* – 1m cable.

**Part No: NK-8000SS-1**

**QTY: 1**

Small SpO<sub>2</sub> Soft Reusable Sensor\*\* – 3m cable.

**Part No: NK-8000SS-3**

**QTY: 1**

Medium SpO<sub>2</sub> Soft Reusable Sensor\*\* – 1m cable.

**Part No: NK-8000SM-1**

**QTY: 1**

Medium SpO<sub>2</sub> Soft Reusable Sensor\*\* – 3m cable.

**Part No: NK-8000SM-3**

**QTY: 1**

Large SpO<sub>2</sub> Soft Reusable Sensor\*\* – 1m cable.

**Part No: NK-8000SL-1**

**QTY: 1**

Large SpO<sub>2</sub> Soft Reusable Sensor\*\* – 3m cable.

**Part No: NK-8000SL-3**

**QTY: 1**

\*\*For use with Nomad portable sleep recorder, AirPSG (requires NK adaptor JL-101A), EOS Sleep Screener, Polysmith 1 and 2 Bed Sleep Systems using LaMont amplifiers, Trackit Sleepwalker, Trackit Ambulatory Recorder (requires Nonin adapter NK-1022) or any Nonin SpO<sub>2</sub> compatible device.



## End Tidal CO<sub>2</sub> OLG-2800A

OLG-2800A Portable Monitor – Requires TG-920P and OLG-2800A-CABLE for interface with sleep amplifier. Probes not included.

**Part No: OLG-2800A**

**QTY: 1**

OLG-2800A Cable – Interface cable between OLG-2800A and sleep amplifier. Probes not included.

**Part No: OLG-2800A-CABLE**

**QTY: 1**

OLG-2800A Sensor – Requires OLG-2800A and OLG-2800A-CABLE for interface with sleep amplifier. Probes not included.

**Part No: TG-920P**

**QTY: 1**

Section

1

Electrode  
Application  
Supplies

2

EEG/PSG

3

EP/EMG/NCV

## JE-921A

EtCO<sub>2</sub> Sensor – For use with JE-921A amplifier. Probes not included.

**Part No: TG-921T3**

**QTY: 1**

## Probes for OLG-2800A and JE-921A ETCO<sub>2</sub>

Adult EtCO<sub>2</sub> Nasal/Oral Probe\* – Includes O<sub>2</sub> cannula clip.

**Part No: YG-122T**

**QTY: 30/BOX**



Adult EtCO<sub>2</sub> Nasal/Oral Probe\* – Includes integrated pressure transducer cannula.

**Part No: YG-125T**

**QTY: 10/PKG**

Pediatric EtCO<sub>2</sub> Nasal/Oral Probe\* – Includes integrated pressure transducer cannula.

**Part No: YG-135T**

**QTY: 10/PKG**

\*For use with TG-920P and TG-921T3.

## AASM Starter Kits: For use with JE-912A and JE-921A amplifiers Pro-Tech

Adult AASM Starter Kit – Meets AASM Standards. Includes nasal/oral thermocouple (1222), PTAF2 Pressure Transducer (1287), zRIP respiratory effort kit without SUM (NK-1808), Pro Wrap, and snore microphone (1716). Does not include EEG electrodes, cannulas, or EKG/EMG snap leads.

**Part No: 1178**

**QTY: 1**



## SleepSense

Adult AASM Starter Kit – Meets AASM Standards. Includes nasal/oral thermocouple (NK-1401), pressure transducer (NK-14830), large (NK-9002-L90) and X-large (NK-9002-L120) RIP Belts, abdominal (NK-9101) and thoracic (NK-9102) RIP wreset, and piezo snore sensor (NK-1250). Does not include EEG electrodes, cannulas, or EKG/EMG snap leads.

**Part No: NK-AASM-KIT**

**QTY: 1**

## Airflow Sensors – Thermocouples and Thermistors Pro-Tech

Neonate Reusable Thermocouple – 1 channel nasal bridge mount flow sensor, 2 pin safety DIN connector.

**Part No: 1214**

**QTY: 1**



### Section

1

Electrode  
Application  
Supplies

2

EEG/PSG

3

EP/EMG/NCV

Adult Reusable Thermocouple – 1 channel flow sensor, 2 pin safety DIN connector, wire length 6".

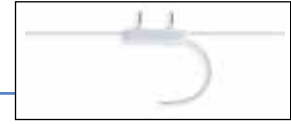
**Part No: 1221**

**QTY: 1**

Adult Reusable Thermocouple – 1 channel flow sensor, 2 pin safety DIN connectors.

**Part No: 1222**

**QTY: 1**



Pediatric Nasal/Oral Reusable Thermocouple – 1 channel flow sensor, 2 pin safety DIN connectors.

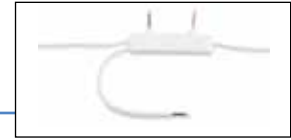
**Part No: 1223**

**QTY: 1**

Adult Nasal/Oral Reusable Thermocouple – 2 channel flow sensor, 3 pin safety DIN connectors.

**Part No: 1224**

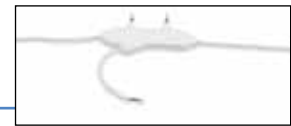
**QTY: 1**



Pediatric Nasal/Oral Reusable Thermocouple – 2 channel flow sensor, 3 pin safety DIN connectors.

**Part No: 1225**

**QTY: 1**



Adult Nasal/Oral Reusable Thermocouple – 2 channel flow sensor, 4 pin safety DIN connectors.

**Part No: 1226**

**QTY: 1**

Pediatric Nasal/Oral Reusable Thermocouple – 2 channel flow sensor, 4 pin safety DIN connectors.

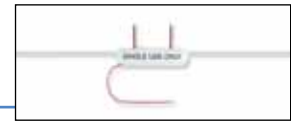
**Part No: 1227**

**QTY: 1**

Adult Nasal/Oral Disposable Thermocouple – For use with reusable wireset part number 1238.

**Part No: 1242**

**QTY: 10**



Airflow Reusable Wireset – For use with disposable air sensor part number 1242. 2 pin safety DIN connector.

**Part No: 1238**

**QTY: 1**

Adult Reuseable Thermocouple – 2 pin safety DIN connector.

**Part No: 1273**

**QTY: 1**



Section

1

Electrode  
Application  
Supplies

2

EEG/PSG

3

EP/EMG/NCV

## SleepSense

Infant/Preemie Thermal Flow Reusable Piezo – 1 channel nasal flow only sensor, 2 pin safety DIN connector.

**Part No: NK-1400**

**QTY: 1**



Adult Nasal/Oral Reusable Thermocouple – 1 channel flow sensor, 2 pin safety DIN connector.

**Part No: NK-1401**

**QTY: 1**



Pediatric Nasal/Oral Reusable Thermocouple – 1 channel flow sensor, 2 pin safety DIN connector.

**Part No: NK-1401P**

**QTY: 1**

Adult Nasal/Oral Reusable Thermocouple – 1 channel flow sensor with cannula attachment mount, 2 pin safety DIN connector.

**Part No: NK-1401H**

**QTY: 1**

Adult Oral Reusable Thermocouple – 1 channel flow sensor, 2 pin safety DIN connector.

**Part No: NK-1413**

**QTY: 1**



Adult Nasal/Oral Reusable Thermistor – 1 channel flow sensor. Integrated interface box, 2 pin safety DIN connector.

**Part No: NK-1469**

**QTY: 1**



Adult Nasal/Oral Reusable Thermistor – consists of reusable nasal/oral thermistor flow sensor (NK-1450S) and interface box with 2 pin safety DIN connector (NK-1450B).

**Part No: NK-1450-KIT**

**QTY: 1**



Replacement Component – reusable nasal/oral thermistor flow sensor. For use with NK-1450B.

**Part No: NK-1450S**

**QTY: 1**

Replacement Component – interface box with 2 pin safety DIN connector. For use with NK-1450S.

**Part No: NK-1450B**

**QTY: 1**

### Section

1

Electrode  
Application  
Supplies

2

EEG/PSG

3

EP/EMG/NCV

## Pressure Transducer

### Pro-Tech

PTAF2 Start-Up Kit – Includes PTAF2 Sensor Module (1288) with AC (1075) & DC (1080) output cables for airflow and snore, as well as 1 each adult, pediatric, and small pediatric nasal cannulas.

**Part No: 1287**

**QTY: 1**



PTAF2 Sensor Module

**Part No: 1288**

**QTY: 1**

Pro-Tech PTAF2 replacement 2 PIN connector cable for use with 1287 and 1288

**Part No: 1075**

**QTY: 1**

Pro-Tech PTAF2 replacement DC 3/32" output cable for use with 1287 and 1288

**Part No: 1080**

**QTY: 1**

PTAFlite Start-Up Kit – Includes PTAFlite Sensor Module with 2 AC outputs for airflow and snore, as well as 1 each adult, pediatric, and small pediatric nasal cannulas.

**Part No: 1289**

**QTY: 1**



## SleepSense

AC Pressure Transducer – With 2 AC outputs for airflow and snore. Includes 5-pack of 7' adult nasal cannulas.

**Part No: NK-14830-KIT**

**QTY: 1**

AC Pressure Transducer – With 2 AC outputs for airflow and snore. Cannulas sold separately.

**Part No: NK-14830**

**QTY: 1**

AC Pressure Transducer Plus – With 2 AC outputs for airflow and snore. 3 sensitivity settings for output signals. Includes 5-pack of 7' adult nasal cannulas.

**Part No: NK-14831-KIT**

**QTY: 1**



AC Pressure Transducer Plus – With 2 AC outputs for airflow and snore. 3 sensitivity settings for output signals. Cannulas sold separately.

**Part No: NK-14831**

**QTY: 1**

Multi-Press Digital Transducer – With airflow and snore signals, 5 sensitivity settings for output signals. Includes AC and DC output cables. Cannulas sold separately.

**Part No: NK-14840**

**QTY: 1**



Section

1

Electrode  
Application  
Supplies

2

EEG/PSG

3

EP/EMG/NCV

## Cannulas Pro-Tech

Adult Pro-Flow Nasal Cannula – Length 8.25".

**Part No: NK-1306**

**QTY: 60/PKG**



Adult Pro-Flow Plus™ Nasal/Oral Cannula. Length 8.25".

**Part No: NK-1308**

**QTY: 30/PKG**

Adult Pro-Flow Plus™ Nasal/Oral Cannula. Length 7'.

**Part No: 1295**

**QTY: 30/BOX**



Adult Pro-Flow Nasal Cannula – Length 7'.

**Part No: 1259**

**QTY: 60/BOX**

Small Pediatric Pro-Flow Nasal Cannula – Length 7'.

**Part No: 1267**

**QTY: 60/BOX**

Pediatric Pro-Flow Nasal Cannula – Length 7'.

**Part No: 1263**

**QTY: 60/BOX**



Pressure Transducer Accessory – Dual port PTAF2 CPAP titration kit.

**Part No: NK-1327**

**QTY: 1**

Thermocouple/Thermistor Accessory – Pro-Wrap adhesive connects Pro-Tech thermocouple/thermistors and cannulas into a single unit for easy patient application. 100 wraps per box.

**Part No: 1162**

**QTY: 1**

## SleepSense

Adult SleepSense Nasal Cannula – Length 2'.

**Part No: NK-14805-2-FT**

**QTY: 5/PKG**



Adult SleepSense Nasal Cannula – Length 2'.

**Part No: NK-14805-2FT-50**

**QTY: 50/PKG**



Section

1

Electrode  
Application  
Supplies

2

EEG/PSG

3

EP/EMG/NCV

## Snore Sensors

### Pro-Tech

Snore Sensor – Piezo snore sensor, 2 pin safety DIN connector.

**Part No: 1696**

**QTY: 1**



Snore Sensor – Snore microphone, 2 pin safety DIN connector.

**Part No: 1716**

**QTY: 1**

### SleepSense

Snore Sensor – Piezo snore sensor, 2 pin safety DIN connector.

**Part No: NK-1250**

**QTY: 1**

## Respiratory Effort Sensors

### Inductive Plethysmography Sensors

#### Pro-Tech

##### RIP Sensor

RIP Sensor – zRIP sensor without SUM channel. Includes zRIP driver module (NK-1732) with AC outputs for thoracic and abdominal signals, 2 adult zRIP belts (NK-1806), and thoracic and abdominal wiresets (NK-1133).



**Part No: NK-1808**

**QTY: 1**

RIP Sensor – zRIP sensor without SUM channel. Includes zRIP driver module with AC outputs for thoracic and abdominal signals.

**Part No: NK-1732**

**QTY: 1**

RIP Sensor – zRIP sensor with SUM channel. Includes zRIP drive module. (NK-1753) and 3 AC outputs for thoracic, abdominal, and SUM signals, 2 adult zRIP belts (NK-1806), and thoracic and abdominal wiresets (NK-1133).



**Part No: NK-1839**

**QTY: 1**

RIP Sensor – zRIP sensor without SUM channel. Includes zRIP driver module with AC outputs for thoracic and abdominal signals.

**Part No: NK-1753**

**QTY: 1**

##### RIP Belt

Adult zRIP Belt – Belt length 24" – 75". For use with NK-1808, NK-1839, NK-1732 and NK-1753.



**Part No: NK-1806**

**QTY: 1**

Pediatric zRIP Belt – Belt length 16" – 42". For use with NK-1808, NK-1839, NK-1732 and NK-1753.

**Part No: NK-1807**

**QTY: 1**

Section

1

Electrode  
Application  
Supplies

2

EEG/PSG

3

EP/EMG/NCV

Large Adult zRIP Belt – Belt length 45" – 123". For use with NK-1808, NK-1839, NK-1732 and NK-1753.

**Part No: NK-1822**

**QTY: 1**

zRIP Wireset – Replaces the thoracic or abdominal wireset. Connects zRIP belts to zRIP driver module. For use with NK-1808, NK-1839, NK-1732 and NK-1753.

**Part No: NK-1133**

**QTY: 1**

## SleepSense

### RIP Sensor

RIP Sensor – Multi-RIP with SUM channel module (NK-9201). Includes AAA batteries, thoracic and abdominal wiresets and cable for AC outputs (thoracic, abdominal, and SUM signals). 1-year warranty. SleepSense RIP Belts not included.

**Part No: NK-9201-KIT**

**QTY: 1**

RIP Sensor – Abdominal wireset. 2 pin safety DIN connector for AC outputs. RIP Sensor connects with any SleepSense RIP Belt. 1-year warranty.

**Part No: NK-9101**

**QTY: 1**



RIP Sensor – Thoracic wireset. 2 pin safety DIN connector for AC outputs. RIP Sensor connects with any SleepSense RIP Belt. 1-year warranty.

**Part No: NK-9102**

**QTY: 1**

### RIP Belt

Adult Reusable RIP Belt\* – “One size fits all”. Washable belt with buckle closure. Belt color: blue. Includes 1-year warranty.

**Part No: NK-9010**

**QTY: 1**

Neonate Semi-reusable RIP Belt\* – Washable. Designed for 70 uses. Belt color: white. 60-day warranty.

**Part No: NK-9002S**

**QTY: 2**

Small/Infant Semi-reusable RIP Belt\* – Washable belts designed for 70 uses. Belt color: white. 60-day warranty.

**Part No: NK-9002-L40**

**QTY: 2**



Medium/Pediatric Semi-reusable RIP Belt\* – Washable belts designed for 70 uses. Belt color: white. 60-day warranty.

**Part No: NK-9002-L60**

**QTY: 2**



Section

1

Electrode  
Application  
Supplies

2

EEG/PSG

3

EP/EMG/NCV

\*For use with NK-9101-NO, NK-9102-NO, NK-9201, NK-9101 and NK-9102.

Large Semi-reusable RIP Belt\* – Washable belts designed for 70 uses. Belt color: white. 60-day warranty.

**Part No: NK-9002-L90**

**QTY: 2**



X-large Semi-reusable RIP Belt\* – Washable belts designed for 70 uses. Belt color: white. 60-day warranty.

**Part No: NK-9002-L120**

**QTY: 2**



XX-large Semi-reusable RIP Belt\* – Washable belts designed for 70 uses. Belt color: white. 60-day warranty.

**Part No: NK-9002-L150**

**QTY: 2**

Small/Infant Semi-reusable RIP Belt\* – Washable belts designed for 70 uses. Belt color: blue. 60-day warranty.

**Part No: NK-9003-L40**

**QTY: 2**



Medium/Pediatric Semi-reusable RIP Belt\* – Washable belts designed for 70 uses. Belt color: blue. 60-day warranty.

**Part No: NK-9003-L60**

**QTY: 2**

Large Semi-reusable RIP Belt\* – Washable belts designed for 70 uses. Belt color: blue. 60-day warranty.

**Part No: NK-9003-L90**

**QTY: 2**

X-large Semi-reusable RIP Belt\* – Washable belts designed for 70 uses. Belt color: blue. 60-day warranty.

**Part No: NK-9003-L120**

**QTY: 2**

XX-large Semi-reusable RIP Belt\* – Washable belts designed for 70 uses. Belt color: blue. 60-day warranty.

**Part No: NK-9003-L150**

**QTY: 2**

\*For use with NK-9101-NO, NK-9102-NO, NK-9201, NK-9101 and NK-9102.

## **Piezo Respiratory Effort Sensors** **Pro-Tech**

Adult Piezo Sensor Kit – Includes three 2 channel piezo sensor straps with 2 pin safety DIN connector (thoracic, abdominal, and spare sensor – 1496/1460) and two 1.5" Velcro belt kits (1420).

**Part No: 1463**

**QTY: 1**



Section

1

Electrode  
Application  
Supplies

2

EEG/PSG

3

EP/EMG/NCV

Pediatric Piezo Sensor Kit – Includes three 2 channel piezo sensor straps with 2 pin safety DIN connector (thoracic, abdominal, and spare sensor – 1453) and two 1" Velcro belt kits (1448).

**Part No: 1464**

**QTY: 1**

Adult Velcro Piezo Sensor Kit – Includes 1 channel piezo sensor with 2 pin safety DIN connector (1496/1460) and 1.5" wide Velcro belt kit (1420 – size 1, 2, and 3).

**Part No: 1497**

**QTY: 1**



Pediatric Velcro Piezo Sensor Kit – Includes 1 channel piezo sensor with 2 pin safety DIN connector (1496/1460) and pediatric 1.5" wide Velcro belt kit (1416 - size 1, 2, 3, and 4).

**Part No: 1498**

**QTY: 1**

Adult Piezo Sensor – Includes 1 channel piezo sensor. Works with 1.5" Velcro belts.

**Part No: 1460**

**QTY: 1**

Adult Piezo Velcro Effort Sensor Kit – Includes piezo sensor and 1.5" belt.

**Part No: 1461**

**QTY: 1**

Pediatric Velcro Piezo Sensor Kit – Includes 1 piezo sensor with 2 pin safety DIN connector (1453) and pediatric 1" wide Velcro belt kit (1448 – size 1, 2, 3, and 4).

**Part No: 1462**

**QTY: 1**

Pediatric Piezo Sensor – Includes 1 channel piezo sensor. Works with 1" Velcro belts.

**Part No: 1453**

**QTY: 1**

Adult Piezo Sensor – 1 piece band and buckle closure with 2 pin safety DIN connector strap.

**Part No: 1582**

**QTY: 1**



Pediatric Piezo Sensor – 1 piece band and buckle closure with 2 pin safety DIN connector strap.

**Part No: 1585**

**QTY: 1**

Piezo Sensor Replacement – 2 pin safety DIN connector piezo sensor works with 1.5" wide Velcro belts. Velcro belts not included.

**Part No: 1496**

**QTY: 1**

Pediatric Piezo Velcro Belt Replacement – Includes 1.5" wide belts sizes 1, 2, and 3. For use with 1461, 1463, 1460, 1496, 1497 and 1498. Does not include piezo sensor.

**Part No: 1416**

**QTY: 1**

Section

1

Electrode  
Application  
Supplies

2

EEG/PSG

3

EP/EMG/NCV

Adult Piezo Velcro Belt Replacement – Includes 1.5" wide belts sizes 1, 2, and 3. For use with 1461, 1463, 1460, 1496, 1497 and 1498. Does not include piezo sensor.

**Part No: 1420**

**QTY: 1**

Pediatric Piezo Velcro Belt Replacement – Includes 1" wide belts sizes 1, 2, 3, and 4. For use with 1462 and 1464. Does not include Piezo sensor.

**Part No: 1448**

**QTY: 1**

## SleepSense

Adult Piezo Crystal Effort Sensor Kit – Includes 1 piezo Effort Sensor Belt with 2 pin safety DIN connector (NK-1370) and 1 large size 1" wide Velstretch® Band with two female buckles.

**Part No: NK-1370-KIT**

**QTY: 1**



Adult Piezo Crystal Respiration Effort Sensor – Double buckle style closure with 2 pin safety DIN connector.

**Part No: NK-1370**

**QTY: 1**



Pediatric Piezo Crystal Effort Sensor Kit – 1 Effort Sensor Belt (NK-1388), 1 small and 1 infant size 1" wide Velstretch® Bands with Velcro tabs.

**Part No: NK-1388-KIT**

**QTY: 1**



Pediatric Piezo Crystal Respiration Effort Sensor – Double Velcro tabs, safety DIN connector.

**Part No: NK-1388**

**QTY: 1**



## PLM Sensors Pro-Tech

Piezo PLM Sensor Kit – Includes piezo sensor and velcro ankle band.

**Part No: 1698**

**QTY: 1**



Piezo PLM Sensor Kit – Includes 2 piezo sensors and 2 Velcro ankle bands.

**Part No: 1699**

**QTY: 1**

## SleepSense

Piezo PLM Sensor Kit – Includes piezo sensor and 2 Velcro ankle bands.

**Part No: NK-1771-2-KIT**

**QTY: 1**



Section

1

Electrode  
Application  
Supplies

2

EEG/PSG

3

EP/EMG/NCV

## Body Position Sensors

SPI Sensor – DC with 1.5mm safety connector.

Part No: 1664SPI

QTY: 1



## Sensor Tester Pro-Tech

Electrode and sensor tester.

Part No: NK-1711

QTY: 1



## SleepSense

Electrode and sensor tester.

Part No: NK-5100

QTY: 1

## PSG System Accessories

USB digital video capture device. Replaces NK-BELKIN.

Part No: NK-1815978

QTY: 1

USB Extender – works up to 300'. Replaces NK-00-000222.

Part No: NK-00-00252

QTY: 1

USB Extender Mounting Bracket – Mounting bracket for NK-00-00252 USB Extender.

Part No: NK-00-00268

QTY: 1/PKG

## Wire Jumpers

1.5MM Safety Male Jumper Wireset

Part No: 1097

QTY: 1

Section

1

Electrode  
Application  
Supplies

2

EEG/PSG

3

EP/EMG/NCV

## Cable, Remote Markers

Patient activated remote marker cable for use with Analog EEG Systems; 1/4 inch plug. Applicable instruments: EEG-4400/5410

**Part No: 2830-300104**

**QTY: 1**

Patient activated remote marker cable for use with Digital EEG Systems. 1/8 inch plug. Applicable Instruments: EEG-2100, EEG-2110, EEG-1100, EEG-9100, EEG-9200/9300

**Part No: 277825A**

**QTY: 1**

## BraiNet® – EEG Accessories

BraiNet Template; Large, Single – Fits 54-62cm circumference

**Part No: NK-101**

**QTY: 1**



BraiNet Template; Small, Single – Fits 46-54cm circumference

**Part No: NK-100**

**QTY: 1**

BraiNet Electrode Pack, Disc Electrodes

**Part No: NK-600**

**QTY: 1**



BraiNet Electrode Pack, EEG Needle Electrodes

**Part No: NK-700**

**QTY: 1**



Baby BraiNet Template, 25-29CM

**Part No: NK-111**

**QTY: 1**

Baby BraiNet Template, 29-33CM

**Part No: NK-112**

**QTY: 1**



Baby BraiNet Template, 33-37CM

**Part No: NK-113**

**QTY: 1**

Baby BraiNet Template, 37-41CM

**Part No: NK-114**

**QTY: 1**

Section

1

Electrode  
Application  
Supplies

2

EEG/PSG

3

EP/EMG/NCV

Baby BraiNet Template, 41-45CM

**Part No: NK-115**

**QTY: 1**

10/20 Electrode Pack, Disc Electrodes

**Part No: NK-601**

**QTY: 1**



BraiNet® Jack Box Overlay

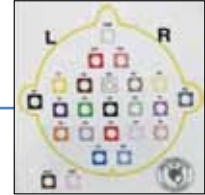
**Part No: NK-500**

**QTY: 1**

10/20 BraiNet® Jackbox Overlay

**Part No: NK-505**

**QTY: 1**



DVD - BraiNet® Template Setup in ICU

**Part No: NK-400**

**QTY: 1**



DVD - Continuous EEG in ICU

**Part No: NK-410**

**QTY: 1**



## Diary, Pocket Size

For use with Ambulatory Recorder

**Part No: NK-90117**

**QTY: 25/PKG**

## Headwraps

Both styles are available in navy only.

DoRag style headwrap (adult size)

**Part No: NK-DORAG-NAVY**

**QTY: 1**



Bandana style headwrap (21.5" x 21.5")

**Part No: NK-BANDANA-NAVY**

**QTY: 1**

Section

1

Electrode  
Application  
Supplies

2

EEG/PSG

3

EP/EMG/NCV

## EEG Paper

### Paper With Head Stamp and Channel Numbers Printed in Red

Part No:	Channels	Applicable Instruments	Dimensions	QTY
FV245-30K	10	EEG-5000 Series & EEG-7000 Series	245mm length	5 BXS/CS
FV345-30K	17	EEG-4217B, EEG-4317B	345mm length	5 BXS/CS
FV400-30J	21	EEG-4221A, EEG-4321B, EEG-4421A	400mm length	5 BXS/CS
PA18-345C/H	18	EEG-4418A	345mm length	5 BXS/CS

### Paper Without Head Stamp and Channel Numbers Printed in Red

Part No:	Channels	Applicable Instruments	Dimensions	QTY
FV400-30C	21	EEG-4214A, EEG-4321B, EEG-4421A	400mm length	5 BXS/CS

## Recording Pen Set

Applicable Instruments: EEG-4400 Series, EEG-5400 Series, EEG-7300 Series

Part No: YE-004A

QTY: 10/BOX



## Water Soluble, Black Recording Ink

400ml plastic bottle with flexible pouring nozzle; 2 year shelf life

Part No: NSE-40BL

QTY: 1

## Pouches

Part No:	Description	QTY
NK-AIRPOUCH	Protective Pouch with Belt and Shoulder Strap for the AirEEG Wireless Transmitter and Input Box	1
NK-PEDIPACK	Pediatric Backpack for Trackit Ambulatory Unit	1
NK-POUCH-JE115	Protective Pouch with Belt and Shoulder Strap for JE-115/116 Mini Input Boxes	1
NK-POUCH-JE208	Protective Pouch with Belt and Shoulder Strap for JE-208 Input Box	1
NK-POUCH-JE213	Protective Pouch with Belt and Shoulder Strap for JE-213/214 Input Boxes	1
NK-POUCH-JE922	Protective Pouch with Belt and Shoulder Strap for JE-910/911/913/914/916 Input Boxes	1
NK-POUCHTRIFOLD	Protective Pouch with Belt and Shoulder Strap for JE-215 Input Box	1

Section

1

Electrode  
Application  
Supplies

2

EEG/PSG

3

EP/EMG/NCV



# SECTION 3

## EP/EMG/NCV



Electrodes

Needle Electrodes

Injectable Needle Electrodes

Stimulators

Cables/Connectors

Miscellaneous

Accessory Order Form

## Reusable EMG/NCV Electrodes

Adult Finger Clip Electrode - 24 red/black lead, stainless steel clips

**Part No: KK-FC-EZ**

**QTY: 1**



Single Alligator Clip (Black) - 24" lead

**Part No: KK-ETL-24BSAF**

**QTY: 1**



Single Alligator Clip (Green) – 24" lead

**Part No: KK-ETL-24GSAF**

**QTY: 1**

Clip, Alligator 24", Red

**Part No: KK-ETL-24RSAF**

**QTY: 1**

Single Alligator Clip (Red) - 24" lead

**Part No: KK-ETL-24GRAF**

**QTY: 1**

Braided Alligator Clips – R, G, BK; 100cm lead

**Part No: KK-ETL-RGB1**

**QTY: 1**

Ring Electrode Pair – Neoprene slide adjustments, stainless steel springs, 24" red/black lead

**Part No: KK-RE(R)-SAF**

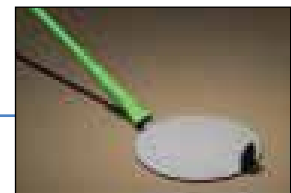
**QTY: 1**



Ground Electrode – Nickel-plated brass, 32mm Flat Disc, 24" lead

**Part No: KK-285-32-24TP**

**QTY: 1**



Ground Electrode – Nickel-plated brass, 32mm Flat Disc, 48" lead

**Part No: KK-285-32-48TP**

**QTY: 1**

Section

1

Electrode  
Application  
Supplies

2

EEG/PSG

3

EP/EMG/NCV

Paired Disc Electrode – 9mm round, locator pin, surgical steel, 24" red/black lead

**Part No: KK-SEF-924SAF**

**QTY: 1**



SlimLine Bar Electrode – Flat 9mm discs, 30mm spacing, 24" red/black lead

**Part No: KK-DDB-F30**

**QTY: 1**



EEG Electrode – Gold, 9mm, 60" lead

**Part No: 445-10G-60TP**

**QTY: 12/PKG**



### Electrode Set, Shielded EP

Shielded electrodes with 60-inch lead cable and Touch Proof connector; Package includes one NE-432B jumper cable

Applicable Instruments: MEB-4200A, MEB-2200A, MEB-5500, MEB- 9100, MEB-9200/9300, MEB-9400

**Part No: NE-132B**

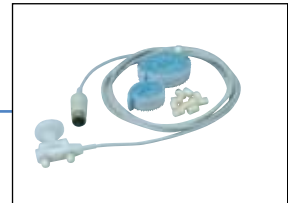
**QTY: 5/PKG**



Surface Stimulation Electrode, 20mm; Adult; MEB-92/9400

**NM-420S**

**QTY: 1**



Connection Cable, NM-420S To MEB-92/9400; 20CM

**YZ-0172**

**QTY: 1**

Surface Stimulation Electrode, 10-33mm; Adult; MEB-92/9400

**NM-430S**

**QTY: 1**

Section

1

Electrode Application Supplies

2

EEG/PSG

3

EP/EMG/NCV

ELECTRODES <<<

## Disposable EMG/NCV Electrodes (one time use only)

Tab Electrodes, 15mm x 20mm, 150cm lead; requires reusable alligator clips

**Part No: KK-700-15-K/C**

**QTY: 12/PKG**



Part Number	Description	Qty
-------------	-------------	-----

KK-714-15/M1	Large Ground Electrode	1
KK-715-05-K/C	Small Sensor NCS, 50cm disposable lead wire	12/BOX
KK-CA-310	Ground Electrodes - 28mm x 20mm, requires reusable alligator clips	100/BOX
KK-715-08-K/C	Small Sensor NCS, 80cm disposable lead wire	12/BOX
KK-CA-510	Ground Electrodes, 34mm x 28mm, requires reusable alligator clips	100/BOX
KK-715-12-K/C	Small Sensor NCS, 120cm disposable lead wire	12/BOX
KK-CA-610	NCV Electrodes, Round, 10mm, requires reusable alligator clips	100/BOX

Twisted Pair 13mm x 27ga, 150cm lead

**Part No: KK-S44-637**

**QTY: 20/PKG**



Twisted Pair 13mm x 27ga, 200cm lead

**Part No: KK-S44-837**

**QTY: 20/PKG**

Corkscrew, 100cm lead

**Part No: KK-001-220**

**QTY: 6/PKG**



## Technomed Disposable Subdermal EEG needle electrode

13 x 0.40mm; Stainless Steel; pvc wire; multi color; DIN 42802 connector

Part Number	Description	QTY
NK-NE-110B	1m (40 inch)	25/PKG
NK-NE-115B	1.5m (60 inch)	25/PKG
NK-NE-120B	2m (80 inch)	25/PKG
NK-NE-125B	2.5m (100 inch)	25/PKG
NK-NE-215B	1.5m (60 inch)	25/PKG
NK-NE-220B	2m (80 inch)	25/PKG

NEEDLE ELECTRODES <<<

Section

1

Electrode Application Supplies

2

EEG/PSG

3

EP/EMG/NCV

## Ambu® Neuroline Disposable Concentric EMG Needle electrode

Part Number	Description	QTY
KK-740-25-30	25 x .30mm (30 gauge); Light grey hub	25/PKG
KK-740-25-45	25 x .45mm (26 gauge); Dark grey hub	25/PKG
KK-740-30-35	30 x .35mm (28 gauge); Purple hub	25/PKG
KK-740-38-45	38 x .45mm (26 gauge); Green hub	25/PKG
KK-740-50-45	50 x .45mm (26 gauge); Yellow hub	25/PKG
KK-740-75-65	75 x .65mm (23 gauge); Red hub	25/PKG

## Ambu Concentric Needle Cable

Reusable Concentric EMG Needle Cable, 5 Pin DIN, 1m

Part No: **KK-1741**

QTY: 1

## Technomed Disposable Concentric EMG Needle electrode

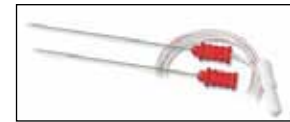
Gold plated needle

Part Number	Description	QTY
NK-NM-125C	25 x 0.30mm (30 gauge); Pt/Ir electrode wire; Red hub	25/PKG
NK-NM-325C	25 x 0.40mm (27 gauge); Pt/Ir electrode wire; Yellow hub	25/PKG
NK-NM-437C	37 x 0.45mm (26 gauge); Pt/Ir electrode wire; Green hub	25/PKG
NK-NM-450C	50 x 0.45mm (26 gauge); Pt/Ir electrode wire; Blue hub	25/PKG
NK-NM-575C	75 x 0.60mm (23 gauge); Pt/Ir electrode wire; Violet hub	25/PKG

Technomed Reusable Cable for concentric+single fiber EMG needle electrode; 1.25m (50 inch) flexible gray Cable, 5 pole DIN connector;

Part No: **NK-BM-325C**

QTY: 1



## Ambu® Monopolar EMG Needles

Part Number	Description	QTY
KK-742-25-36	Detachable Lead, 25mm x 28ga	40/PKG
KK-743-25-36	Lead Attached, 25mm x 28ga	40/PKG
KK-742-38-36	Detachable Lead, 38mm x 28ga	40/PKG
KK-743-38-36	Lead Attached, 38mm x 28ga	40/PKG
KK-742-38-45	Detachable Lead, 38mm x 26ga	40/PKG
KK-743-38-45	Lead Attached, 38mm x 26ga	40/PKG
KK-742-50-45	Detachable Lead, 50mm x 26ga	40/PKG
KK-743-50-45	Lead Attached, 50mm x 26ga	40/PKG
KK-742-75-50	Detachable Lead, 75mm x 25ga	40/PKG
KK-743-75-50	Lead Attached, 75mm x 25ga	40/PKG

Section

1

Electrode  
Application  
Supplies

2

EEG/PSG

3

EP/EMG/NCV

## Monopolar Needle Cable

Reusable Monopolar Needle Cable, 61cm length

**Part No: KK-1744**

**QTY: 1**

## Technomed Disposable Monopolar EMG Needle electrode

Coated Stainless Steel; with 0.75m (30inch) PVC wire attached

Part Number	Description	QTY
NK-NM-225B	25 x 0.35mm (28 gauge); PVC wire attached; Red hub	25/PKG
NK-NM-237B	37 x 0.35mm (28 gauge); Orange hub	25/PKG
NK-NM-425B	25 x 0.45mm (26 gauge); Yellow hub	25/PKG
NK-NM-437B	37 x 0.45mm (26 gauge); Green hub	25/PKG
NK-NM-450B	50 x 0.45mm (26 gauge); Blue hub	25/PKG
NK-NM-475B	75 x 0.45mm (26 gauge); Violet hub	25/PKG

## Technomed Disposable Detachable Monopolar EMG Needle electrode

Part Number	Description	QTY
NK-NM-225U	25 x 0.35mm (28 gauge); coated Stainless Steel; Red hub	25/BOX
NK-NM-237U	37 x 0.35mm (28 gauge); coated Stainless Steel; Orange hub	25/BOX
NK-NM-425U	25 x 0.45mm (26 gauge); coated Stainless Steel; Yellow hub	25/BOX
NK-NM-437U	37 x 0.45mm (26 gauge); coated Stainless Steel; Green hub	25/BOX
NK-NM-450U	50 x 0.45mm (26 gauge); coated Stainless Steel; Blue hub	25/BOX
NK-NM-475U	75 x 0.45mm (26 gauge); coated Stainless Steel; Violet hub	25/BOX

Technomed Reusable Unshielded Cable for detachable monopolar EMG needle electrode; 0.6m (24 inch) flexible blue cable; DIN 42802 connector

**Part No: NK-BM-302U**

**QTY: 1**

Technomed Reusable Shielded Cable for detachable monopolar EMG needle electrode; 1m (40 inch) flexible gray Cable, blue 5 pole DIN connector

**Part No: NK-BM-315U**

**QTY: 1**

Section

1

Electrode  
Application  
Supplies

2

EEG/PSG

3

EP/EMG/NCV

## Injectable Monopolar EMG Needles



### Ambu Neuroline® Inoject™ Injectable Monopolar EMG Needles (single use only)

Part Number	Description	QTY
KK-744-25-30	Inoject - 25mm x 30ga	10/PKG
KK-744-30-36	Inoject - 30mm x 28ga	10/PKG
KK-744-35-40	Inoject - 35mm x 27ga	10/PKG
KK-744-38-45	Inoject - 38mm x 26ga	10/PKG
KK-744-50-50	Inoject - 50mm x 25ga	10/PKG
KK-744-75-55	Inoject - 75mm x 24ga	10/PKG

## Stimulators

Disposable Handle for Pedicle Hole Stimulator

**Part No: KK-RMA1012**

**QTY: 5/PKG**



Disposable Pedicle Hole Stimulator

**Part No: KK- RMA1009D**

**QTY: 12/PKG**

Stimulator, variable intensity, MEB-9100

**RY-441B**

**QTY: 1**

## EMG Cables

Part Number	Description	Qty
AAA-15955	USB Cable for MEB-92/93/2200, 9M	1
BM-001B	5 Pin MEB Cable	1
C927	Leg Wire Extensions; 48-inch	5/PKG

Section

1

Electrode  
Application  
Supplies

2

EEG/PSG

3

EP/EMG/NCV

## Cable, Stimulation/Input

5-foot extension cable, 5 Pin, round DIN connector allows for stimulator connection or electrode input connection; 1.5mm DIN type Touch Proof lead input block provides for simultaneous negative and positive input connection

Applicable instruments: MEB and MEM Series Instruments

**Part No: SP-166-5**

**QTY: 1**

25-foot extension cable. 5 Pin, round DIN connector allows for stimulator connection or electrode input connection; 1.5mm DIN type Touch Proof lead input block provides for simultaneous negative and positive input connection

Applicable instruments: MEB and MEM Series Instruments

**Part No: SP-166-25**

**QTY: 1**

5-foot extension cable. 8 Pin, round DIN connector allows for stimulator connection or electrode input connection; 1.5mm DIN type Touch Proof lead input block provides for simultaneous negative and positive input connection

Applicable instruments: MEB and MEM Series Instruments

**Part No: SP-168-5**

**QTY: 1**

25-foot extension cable; 8 Pin, round DIN connector allows for stimulator connection or electrode input connection; 1.5mm DIN type Touch Proof lead input block provides for simultaneous negative and positive input connection

Applicable instruments: MEB and MEM Series Instruments

**Part No: SP-168-25**

**QTY: 1**

## Cable, BNC to BNC

3-foot cable with BNC to BNC male connectors; connects VM-125 or PM-155 Visual Monitors to all Nihon Kohden Neuropack products

Applicable instruments: MEB and MEM Series Instruments

**Part No: 5050-B-60-0**

**QTY: 1**

Section

1

Electrode  
Application  
Supplies

2

EEG/PSG

3

EP/EMG/NCV

## Miscellaneous Cable, Gelpad

36-inch Twisted-Pair Alligator Clip leads with 1.55mm DIN type connectors. Use with NK-GELPAD pre-gelled electrode pads. Applicable instruments: MEB and MEM Series Instruments.

**Part No: NK-GELPAD-TPCBL**

**QTY: 1**

## Gelpad

Electrode, disposable pad

**Part No: NK-GELPAD**

**QTY: 100/BOX**

## Buzz Kill Noise Detector

OR Version

**Part No: KK-BK-OR**

**QTY: 1**



## Cable, Jumper

DIN Shortening lead cable for NE-132B Electrode Set

**Part No: NE-432B**

**QTY: 5/PKG**



## Holder, Input Box

Quick disconnect bracket for JB-482BK, JB-216BK, JB-241BK, JB-281BK, MS-210BK input boxes. Includes one 6143-001909 holder assembly. Applicable Instruments: MEB-4200, MEB-5508A, MEB-2200, MEB-9200/9300.

**Part No: DI-0016**

**QTY: 1**

## Ear Phone

Ear Phone – 5 pin round DIN R connector, cable length 3.0 m.

Applicable Instruments: MEB-2200A, MEB-9200/9300, MEB-9400, MEE-1000.

**Part No: YE-103J**

**QTY: 1**



Ear Phones – 4 pin XLR connector, cable length 3.0 m, supplied with ear adapters for adults.

**Part No: YE-102J**

**QTY: 1**

Ear inserts from Etyomotic – Applicable Instruments: MEE-1000.

**Part No: NK-Etyomotic**

**QTY: 1**

Section

1

Electrode  
Application  
Supplies

2

EEG/PSG

3

EP/EMG/NCV

## Ear Insert

Replacement Ear Inserts – Includes 3 sizes in each package: SM, MED, LG.  
Applicable Instruments: YE-103J.

**Part No: SVC-200**

**QTY: 1/PKG**

Replacement Ear Inserts – Applicable Instruments: YE-102J.

**Part No: AAA-90080**

**QTY: 2/PKG**

Ear Insert – Child, use with YE-102J.

**Part No: AAA-90081**

**QTY: 2/PKG**

## Goggles, LED

Application Instruments: MEB-9100, MEB-9200/9300, MEB-9400,  
MEE-1000.

**Part No: LS-102J**

**QTY: 1**



## Headphones

4 Pin Connector Headphones – Applicable Instruments: MEB-4200A, MEB-5304K, MEB-7102A,  
MEM-7102A, MEM-4104K, MEB-2200, MEE-1000.

**Part No: DR-531B-10**

**QTY: 1**

## SEN-4100

5M SEN-4100 Extension Cable to DIN Stimulation Electrodes

**Part No: BM-412B**

**QTY: 1/PKG**

5M SEN-4100 Connection Cable with MEE Amplifier

**Part No: JW-120B**

**QTY: 1/PKG**

## MEE to Junction Box

MEE To J Box 10M Extension Cable

**Part No: 903408A**

**QTY: 1/PKG**

Cable Binder for MEE Breakout Box

**Part No: 6113-020829E**

**QTY: 1/PKG**



Section

1

Electrode  
Application  
Supplies

2

EEG/PSG

3

EP/EMG/NCV

## Power Cord

Power Cord, Hospital Grade, 2'

Part No: NK-86614240

QTY: 1/PKG

## Power Strip

Power Strip, Hospital Grade, 6'

Part No: NK-ULBH6-6

QTY: 1/PKG

### Section

1

Electrode  
Application  
Supplies

2

EEG/PSG

3

EP/EMG/NCV

## **IMPORTANT NOTE REGARDING NEEDLE ELECTRODES**

All needle electrode applications should be supervised by a physician and performed by certified personnel. Nihon Kohden shall not be held responsible for injury, infection or any loss or damage resulting from the misuse or improper handling of needle electrodes.

Nihon Kohden warrants its products to be free from defects in manufacturing. If any electrode fails to perform per its intended use due to defective material or workmanship, it will be replaced at no charge to the purchaser. This warranty does not include failures due to normal wear, misuse, abuse, or damage from improper sterilization or handling procedures. Defective electrode(s) should be returned for replacement or credit. For appropriate credit to your account, the manufacturing Lot Number, displayed on all Nihon Kohden disposable needle electrodes, must be referenced with all returned electrodes. All returns must have a return receipt number, which may be obtained through our Customer Service Department, Ext. 7021.

## **DISPOSABLE MONOPOLAR AND CONCENTRIC NEEDLES**

Nihon Kohden's disposable needle electrodes are intended for single use only and are individually packaged as sterile. The single use only needles are designed to insure patient safety; eliminating the risk of cross contamination. They should never be re-sterilized. Single use needles should be properly disposed after every patient use in accordance with good laboratory and clinical practices.

## **REUSABLE NEEDLE ELECTRODES**

Nihon Kohden's Reusable Concentric and Bipolar Needles must be sterilized before each use. Electrodes should be cleaned prior to sterilization. Follow Instructions For Use (IFU) included in the package, for appropriate sterilization method. Inspection of the electrodes for damage or unacceptable wear should be made prior to sterilization and reuse.

